

MADSEN GIERSSING

Graduate Program



Madsen Giersing

The innovators in engineering design

An aerial photograph of a long pier under construction over a vast blue ocean. The pier is made of concrete and steel, with a crane at the far end. The sky is clear and blue. The text 'Our Philosophy and Values' is overlaid in large white letters.

Our Philosophy and Values

Philosophy

- Develop innovative constructible and commercially aware solutions
- Work with our clients to develop solutions tailored for their needs

Values

- Integrity
- Innovation and excellence in design and service
- Accountability, responsibility, and reliability
- Long term client relationships
- Long term collaboration with our team
- Kindness and support

A portrait of Lasse Madsen, a man with dark hair and glasses, wearing a dark suit jacket over a white shirt. He is smiling and looking directly at the camera. The background is a textured, light-colored wall.

Lasse Madsen
Chief Executive Officer

We are thrilled that you are interested in Madsen Giersing's Graduate Program. We believe that we have created the perfect environment for you to develop your skills, build your knowledge and gain experience working on interesting, challenging and diverse infrastructure projects.

At our heart we are a family business that prides itself of creating an inclusive working environment with a flat structure, accessible team and a commitment to creating an outstanding workplace culture that allows our talented team to thrive and to succeed.

Our management team and team members work to create and maintain positive individual and collective relationships, and are expected to do so as a core part of their job.

Our philosophy is aligned with our values and company vision 'to create a sustainable business capable of delivering innovation and excellence in design services and underpinned by our integrity'.

We look forward to welcoming you to the Madsen Giersing team as part to our Graduate Program.

Your Program

Across a 4-year program we will work with you and provide you with the opportunities you need to complement your studies and establish your professional career. However, a special opportunity is not open to all, there are a few things you have to have to be part of Madsen Giersing.

1

Foundation Year

2

Foundation and Consolidation

3

Consolidation and Client Exposure

4

RPEQ Support

Degree Requirements

You must be in your final year or have completed a Bachelor of Civil Engineering.

Approach

You will need to have a positive attitude and be prepared to work as a team and to embrace our organisations values of:

- Integrity
- Innovation and excellence in design and service
- Accountability, responsibility and reliability
- Long term client relationships
- Long term collaboration with our team
- Kindness and support

Your Program

Across a 4-year program you will gain experience in the following modules and learning opportunities.

Core Modules

1. Quality Assurance
2. Engineering Design Programs
3. Engineering Designs
4. Drawings
5. Design Calculations and Verifications
6. Technical Reports and Specifications
7. Sketches
8. Design Quantities
9. Safety In Design

Development Opportunities

- Mentoring
- Open Door Access to the Management Team
- Participation in Constructionarium Australia Build Program
- Financial Incentives
- Site Visits (Project Dependent)

Reviews

To make sure you are the right fit for us and, as importantly, we are the right fit for you, we schedule regular reviews and have a six month probationary period. Reviews take place at:

- 3 month check-in
- 6 month review prior to completion of probation
- 12 months at anniversary of start date

Constructionarium Australia

Constructionarium Australia runs build programs throughout the year to coincide with University holidays. Each build provides a unique 8-day learning and development experience for undergraduates and emerging professionals as they experience a construction project from tender to client handover. As appropriate, we will make participation available for our graduates.



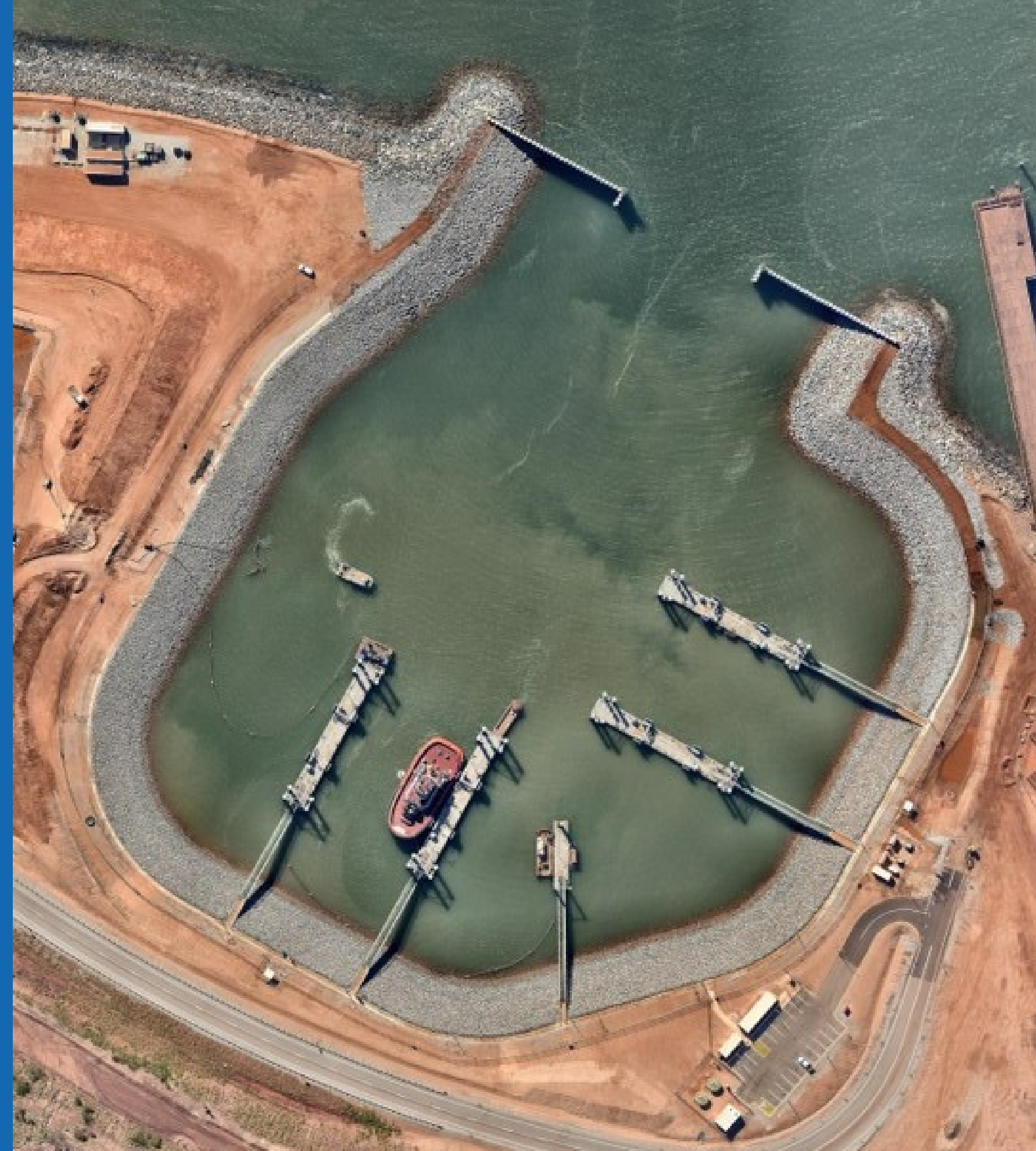
Our Expectations

To be part of our Graduate Program, we expect you to contribute to our organisation through our values, embrace continuous learning and actively seek opportunities to expand your thinking, increase your understanding of design and engineering, and attend professional development workshops and seminars.

You will also be expected to:

- Adhere to and follow Madsen Giersing policies, procedures and code of conduct
- Adhere to our Madsen Giersing Quality Management System (MGQMS)
- Adhere to our Madsen Giersing Workplace Health and Safety Manual

To support you, you will be given appropriate training including a full company induction as well as opportunities to attend industry events, and access company materials and library. We will also, where appropriate, invest in training courses and programs such as participation in Constructionarium Australia.



About Madsen Giersing





The Innovators in Engineering Design

Madsen Giersing are leading marine engineers with expertise and experience in planning, design and assessment of marine infrastructure. As a specialist in the design of temporary works, this compliments our marine capabilities by providing Madsen Giersing with a unique insight into construction of marine works. With a reputation for innovation and complex engineering problem solving, our team works hands-on with our clients throughout a project to deliver practical, safe and cost-effective solutions that suits their requirements.

- Structural engineering consultancy
- Founded in 1988
- Specialise in marine, temporary works and bridges
- Work throughout Australia, South East Asia and South Pacific

What We Do

We are specialists and innovators across marine, structural and bridge engineering as well as project critical temporary works.

1

Marine and Coastal Infrastructure

Madsen Giersing are leading marine engineers with expertise in planning, design and assessment of marine infrastructure.

3

Bridge Engineering

The Madsen Giersing team is experienced in the design and delivery of bridges to meet the infrastructure requirements of government and private enterprise. We also facilitate the protection of existing assets to keep people and materials moving.

4

Structural Engineering

At Madsen Giersing, we have a reputation for providing innovative, commercially aware and practical structural engineering solutions for our clients, regardless of the sector.

2

Temporary Works

At Madsen Giersing we approach temporary works with a unique methodology. We understand the risks involved, the critical issues of timing and, the specialised construction techniques required for optimum outcomes.



Marine and Coastal Infrastructure

Madsen Giersing are leading marine engineers with expertise in planning, design and assessment of marine infrastructure. We are specialists in the design of temporary works and, this expands our capabilities and provides us with unique insights into construction of marine works. With a reputation for innovation and complex engineering problem solving, our team works hands-on with our clients throughout the life of a project to deliver practical, safe and cost-effective solutions tailored to their requirements.

From initial feasibility studies, through to full, detailed engineering design and construction, all projects are strictly quality controlled in accordance with ISO 9001 to ensure the best project outcomes with respect to safety, risk, quality and budget parameters.



Temporary Works

Temporary works are an essential part of the process required to complete permanent works but, they also play a critical role in providing safety on site and meeting project delivery timelines and budgets.

At Madsen Giersing we approach temporary works with a unique methodology. We understand the risks involved, the critical issues of timing and, the specialised construction techniques required for optimum outcomes.

Our innovative solutions are safe, practical and cost effective. Madsen Giersing have a proven record of successfully providing engineering design services for temporary works to both national and international contractors on a broad range of projects in Australia, Papua New Guinea, South East Asia and the South Pacific region.

All of our projects are strictly quality controlled in accordance with ISO 9001 to ensure best for project outcomes with respect to safety, risk, quality and budget.



Bridge Engineering

The Madsen Giersing team is experienced in the design and delivery of bridges to meet the infrastructure requirements of government and private enterprise. We also facilitate the protection of existing assets to keep people and materials moving.

We provide technical assistance during the construction phase of bridges, and ongoing support throughout the lifetime of the completed structure. This includes any temporary works required during construction, follow-on maintenance planning and damage investigation & assessment.

Our team carries out thorough inspections on existing infrastructure and coordinates all the investigative work governments and private enterprise interests require to plan for the future.

We have successfully delivered a broad range of infrastructure projects to both national and international contractors in Australia, Papua New Guinea, South East Asia and the South Pacific region. All of our projects are strictly quality controlled in accordance with ISO 9001 to ensure the best project outcomes with respect to safety, risk, quality and budget.



Structural Engineering

At Madsen Giersing, we have a reputation for providing innovative, commercially aware and practical structural engineering solutions for our clients, regardless of the sector.

Always innovative, we were amongst the first to adopt finite element analysis to monitor stresses within structures due to complex connections, geometries or other effects such as impact loading, fatigue and vibration.

Our analysis programs have been developed in-house and are informed by 30 years' experience. They are designed to complement existing commercial design packages, thus allowing industry-leading analysis and design procedures for every project we undertake. From our corporate offices and design headquarters in Brisbane, Madsen Giersing service all Australian states and territories, South East Asia, Papua New Guinea and the wider Pacific region.

Where We Work

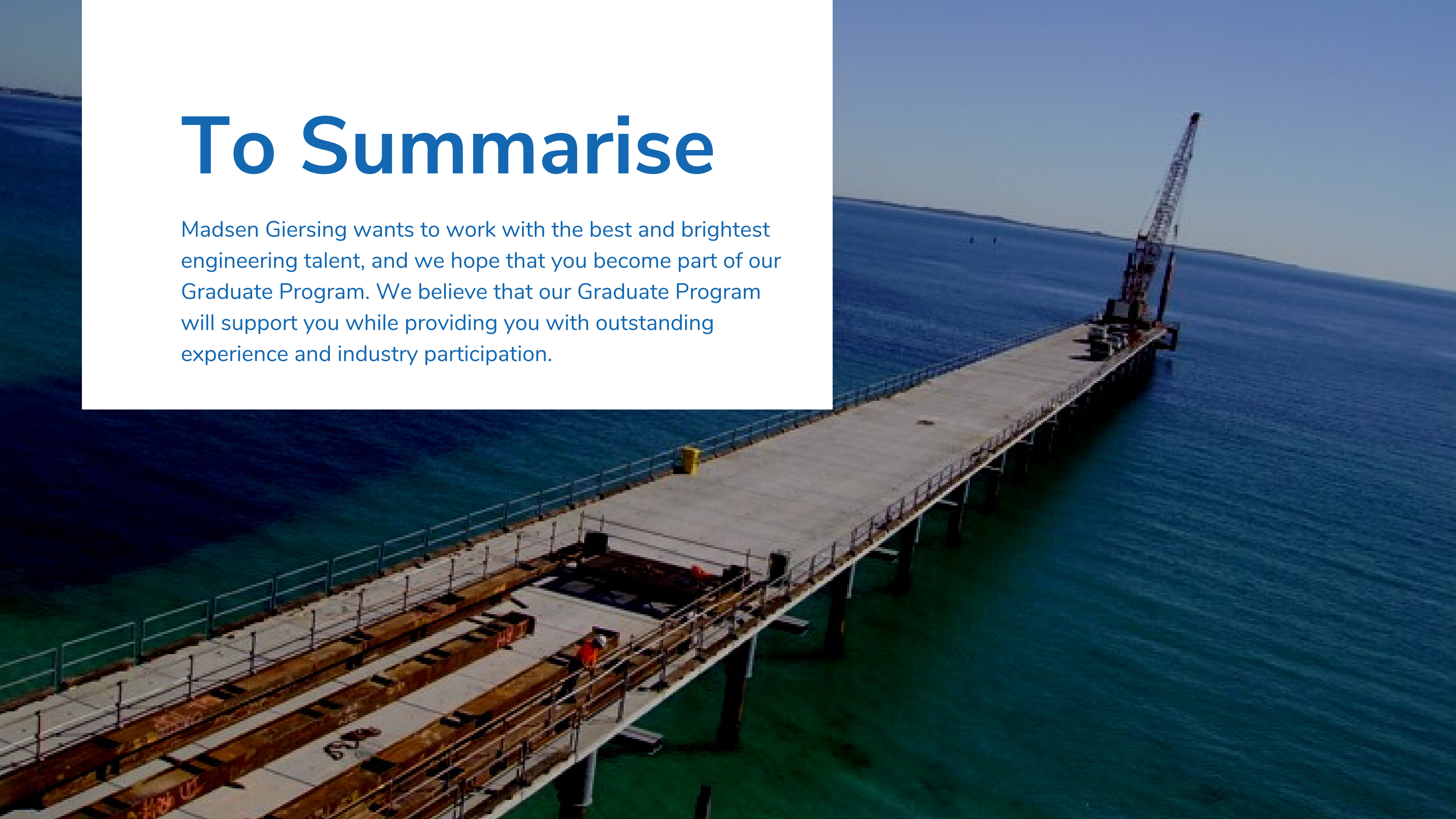


Australia, PNG, South East Asia and the South Pacific

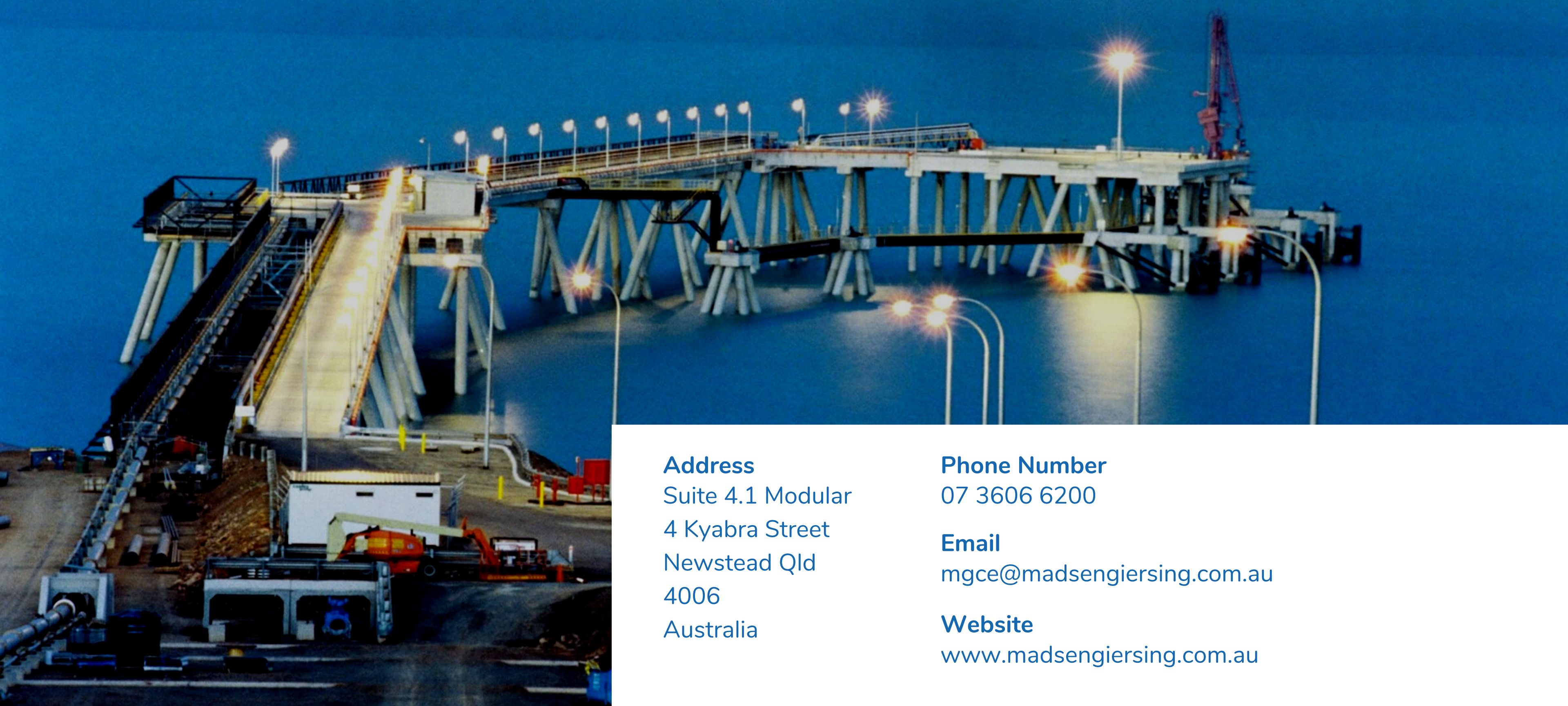
From our first project in Western Australia, we now deliver major projects across Australia and the Asia-Pacific operating successfully in some of the most challenging construction and engineering environments on the planet.

To Summarise

Madsen Giersing wants to work with the best and brightest engineering talent, and we hope that you become part of our Graduate Program. We believe that our Graduate Program will support you while providing you with outstanding experience and industry participation.



Contact Us



Address

Suite 4.1 Modular
4 Kyabra Street
Newstead Qld
4006
Australia

Phone Number

07 3606 6200

Email

mgce@maadsengiersing.com.au

Website

www.madsengiersing.com.au